

8-Hour Confined Space Competent Person Refresher Course for Construction, General Industry, and Shipyards

Course Director

John M. Fernandez, CIH, CSP, CMC - Industrial Hygiene Professionals, Inc.

Benefits

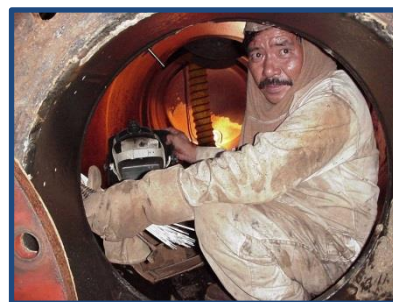
OSHA requires that employers provide training to all employees whose work involves confined spaces in construction (**29 CFR 1926 Subpart AA**), general industry (**29 CFR 1910.146**), shipyards (**29 CFR 1915 Subpart B**). This course is designed to provide refresher training needed by entrants, attendants, entry supervisors, and competent persons to recognize, evaluate, and control the hazards associated with confined space entry ashore and onboard vessels. NAVSEA Standard Item 009-07 requires a minimum of 24 hours initial training and **8 hours annual refresher training** conducted by a NFPA Certified Marine Chemist (CMC) or NFPA instructor. Course participants will be updated and refreshed on terms specific to confined space entry; standards governing confined space entry procedures; proper operation of certain testing instruments and their limitations; appropriate ventilation, personal protective equipment, and emergency procedures that are necessary for entry into permit spaces.

Who Should Attend

Industrial hygienists, emergency medical personnel, firefighters, safety professionals, police officers, sanitary engineers, public works employees, chemical workers, waste water treatment workers, and anyone who has completed the 24-hour initial course and needs an 8-hour update/refresher.

Course Topics

- ❖ ANSI & NFPA Standards
- ❖ OSHA and USCG Regulations
- ❖ Recognizing Hazards in Confined Spaces
- ❖ Air Monitoring Instrumentation
- ❖ Ventilating Confined Spaces
- ❖ Personal Protective and Safety Equipment
- ❖ Confined Space Entry Permits
- ❖ Confined Space Entry Emergencies/Rescues



Each student will receive a student manual, supplemental handouts, course completion certificate, and color photo ID card. **Continental Breakfast and lunch will be provided!**

Course Date/Time: November 21, 2018 / 7:00 a.m. to 4:00 p.m.

Course Location: Pearl Country Club, Aiea

Tuition: \$175 / person

Registration: Industrial Hygiene Professionals, Inc.

508 W. O'Brien Drive

Hagatna, Guam 96910

Tel: (671) 734-0749 * Fax: (671) 989-0749

E-mail: joz@ihpguam.com

Website: www.ihpguam.com

